



Govett Grove, Windlesham

£740,000



Govett Grove, Windlesham

An extended four bedroom link detached home located in a cul-de-sac position centrally within the village and just a short walk into Windlesham Field of Remembrance playing fields.

FEATURES

- Close to the Field Of Remembrance
- Recently refurbished
- Engineered oak flooring to ground floor
- Double glazing
- Walking distance of local gastro pubs
- Outside power point
- Car port
- Pod point electric car charger

ACCOMMODATION

- Entrance Hall
- Downstairs cloakroom
- Three separate reception rooms
- Kitchen/breakfast room
- Utility room
- Four bedrooms (one is en-suite)
- Two bath/shower rooms

OUTSIDE

- Gravel driveway
- Garage with power, lighting and wash basin
- Well stocked south westerly facing garden

EPC RATING

D

LOCAL AUTHORITY/COUNCIL TAX

Surrey Heath – Band F



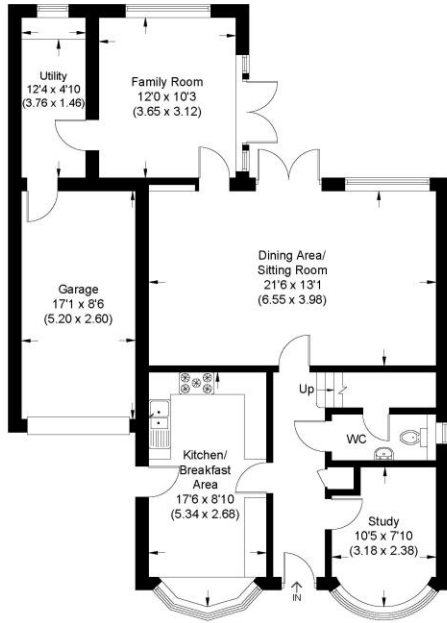


Govett Grove

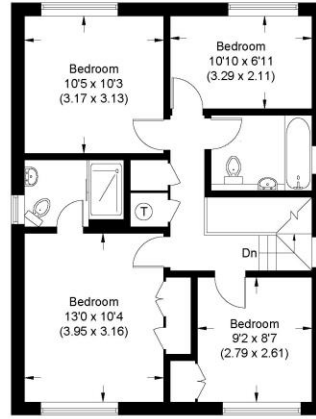
Approximate Gross Internal Area 135.61 sq m / 1459.69 sq ft
(Excluding Garage)

Garage Area 13.52 sq m / 145.53 sq ft

Total Area 149.13 sq m / 1605.22 sq ft (Including Garage)



Ground Floor



First Floor

Illustration for identification purposes only,
measurements are approximate, not to scale.

Disclaimer: We wish to inform prospective purchasers that we have prepared these sales particulars as a general guide. We have not carried out a detailed survey, nor tested the services, appliances and specific fittings. Room sizes are approximate and rounded; they are taken between internal wall surfaces and therefore include cupboards / shelves, etc. Accordingly, they should not be relied upon for carpeting, curtains / blinds and kitchen equipment, whether fitted or not, are deemed removable by the vendor unless specifically itemized within these.

Postcode for sat nav: **GU20 6EE**



NEWTON ROWE
SALES & LETTINGS

The Old Dairy, 7 Updown Hill, Windlesham, Surrey GU20 6AF
enquiries@newtonrowe.co.uk | 01276 986900